



UNIVERSITÀ DI PARMA

ARCHIVIO DELLA RICERCA

University of Parma Research Repository

An updated checklist of Recent ostracods (Crustacea: Ostracoda) from inland waters of Sicily and adjacent small islands with notes on their distribution and ecology

This is the peer reviewed version of the following article:

Original

An updated checklist of Recent ostracods (Crustacea: Ostracoda) from inland waters of Sicily and adjacent small islands with notes on their distribution and ecology / Pieri, Valentina; Marrone, Federico; Martens, Koen; Rossetti, Giampaolo. - In: THE EUROPEAN ZOOLOGICAL JOURNAL. - ISSN 2475-0263. - 87:1(2020), pp. 714-740. [10.1080/24750263.2020.1839581]

Availability:

This version is available at: 11381/2883223 since: 2021-10-04T10:56:33Z

Publisher:

Taylor and Francis Ltd.

Published

DOI:10.1080/24750263.2020.1839581

Terms of use:

Anyone can freely access the full text of works made available as "Open Access". Works made available

Publisher copyright

note finali coverpage

(Article begins on next page)

16 August 2024

An updated checklist of Recent ostracods (Crustacea: Ostracoda) from inland waters of Sicily and adjacent small islands with notes on their distribution and ecology

V. Pieri, F. Marrone, K. Martens and G. Rossetti

Abbreviations used in the SEM figures

L *left*
R *right*
Cp *carapace*
V *valve*
ev *external view*
iv *internal view*
lv *lateral view*
Dv *dorsal view*
Vv *ventral view*

Figure S1. Spatial distribution of *Sarscypridospsis aculeata* (●) and *Plesiocypridospsis newtoni* (△).



Figure S2. Spatial distribution of *Potamocypris arcuata* (●) and *P. villosa* (○).



Figure S3. Spatial distribution of *Heterocypris incongruens*.

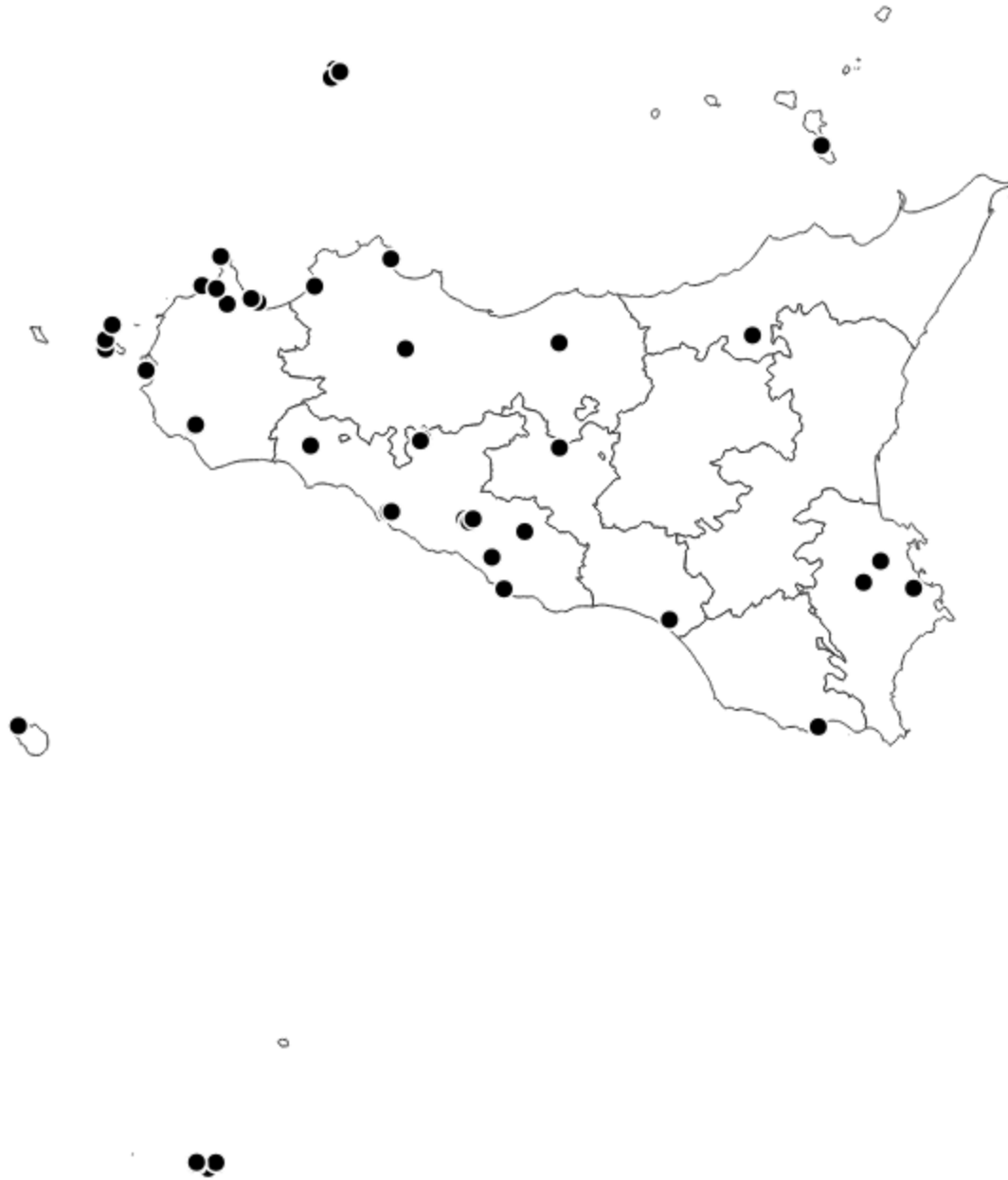


Figure S4. Spatial distribution of *Heterocypris* sp. 1 (●), *H. reptans* (○) and *H. salina* (△).



Figure S5. Spatial distribution of *Eucypris virens*.



Figure S6. Spatial distribution of *Eucypris kerkyrensis* (Δ) and *E. mareotica* (\circ).



Figure S7. Spatial distribution of *Tonnacypris lutaria*.

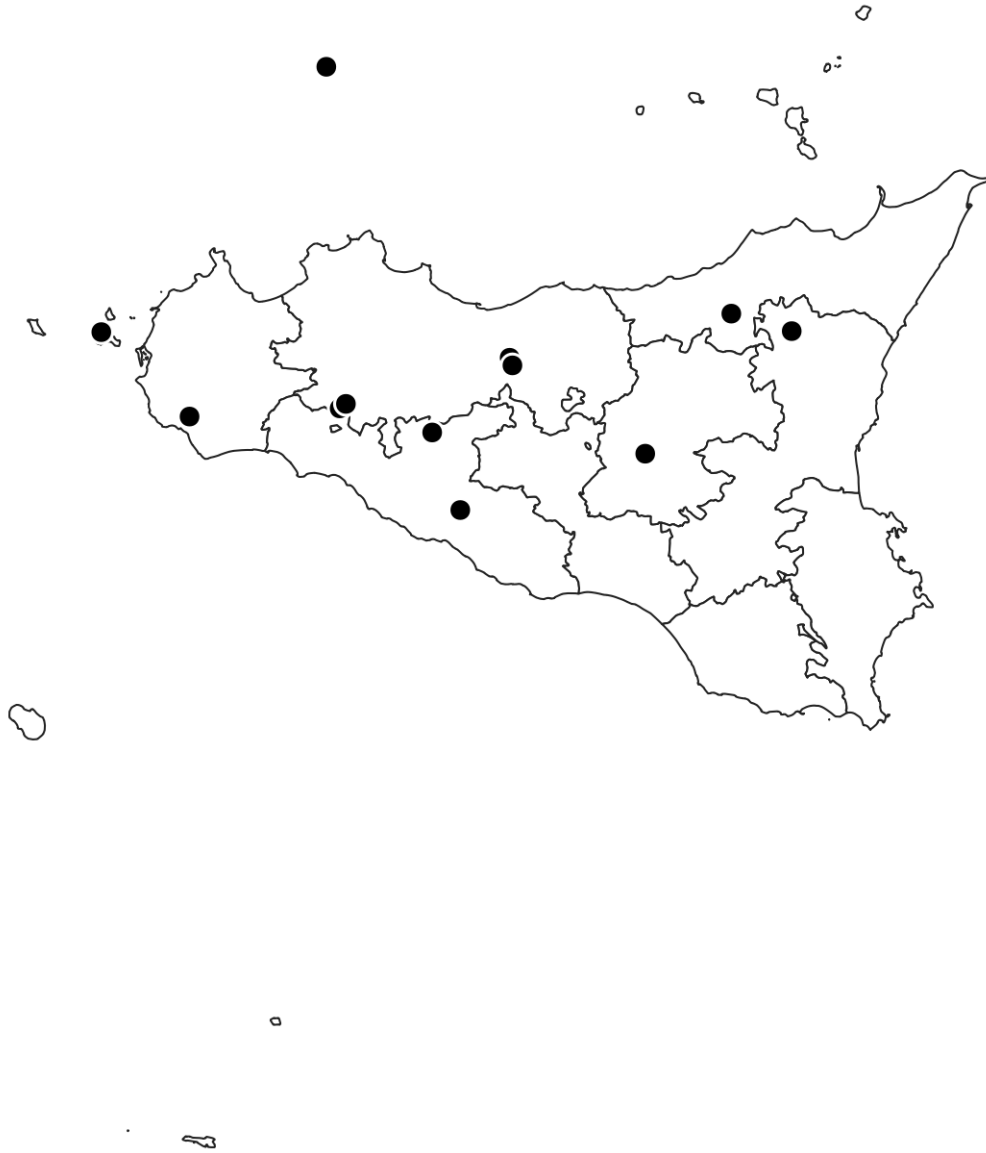


Figure S8. Spatial distribution of *Neglecandona* gr. *neglecta* (★), *N. lindneri* (○) and *N. neglecta* (●).

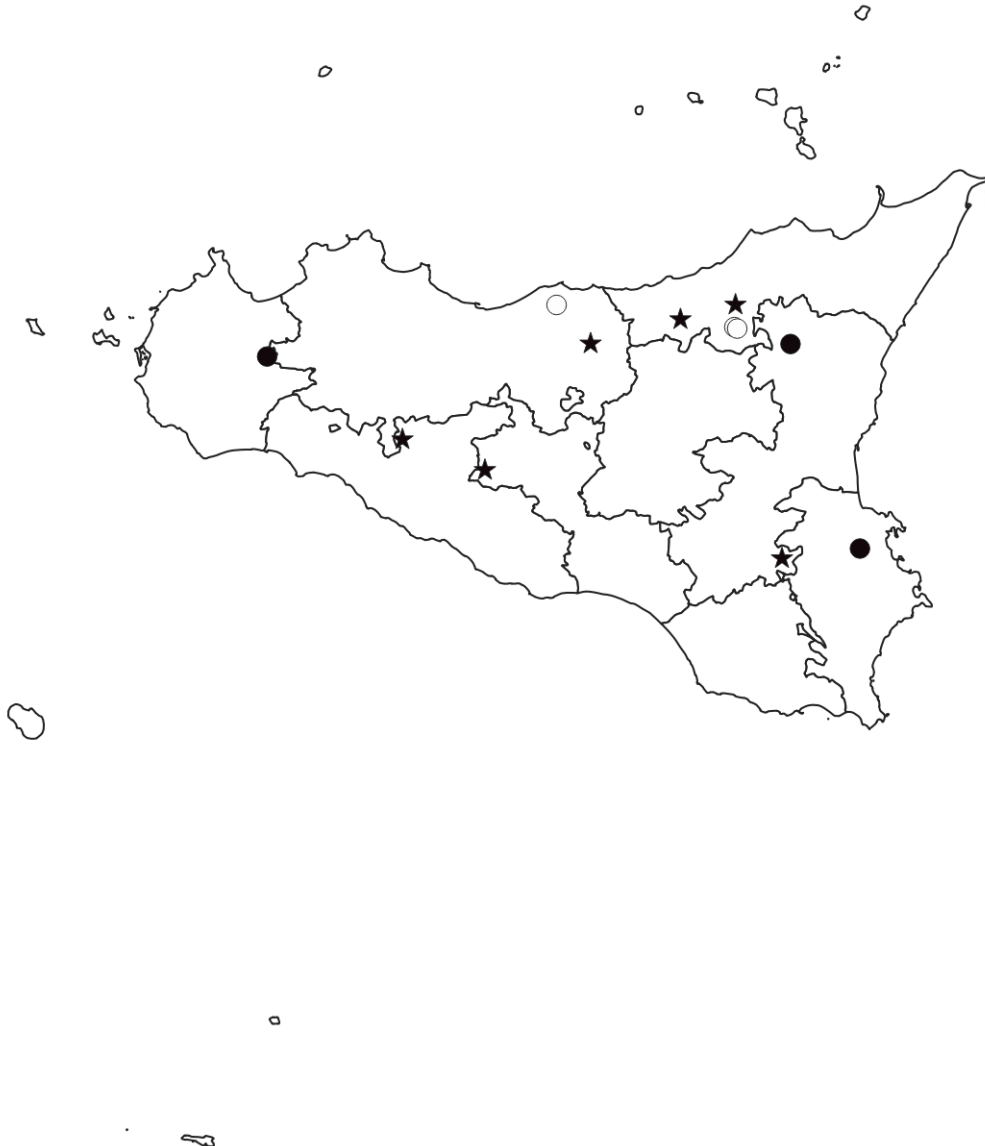


Figure S9. Spatial distribution of *Ilyocypris decipiens* (Δ) and *Ilyocypris getica* (\bullet).



Figure S10. Spatial distribution of *Ilyocypris bradyi* (★), *Ilyocypris gibba* (○) and *Ilyocypris inermis* (●).



Figure S11. Spatial distribution of *Thyrenocythere amnicola*.



Figure S12. A, B: *Plesiocypridopsis newtoni*; C-F: *Sarscypridopsis aculeata*; G-J: *Potamocypris arcuata*. A: VP0309, ad ♀, CpRlv; B: VP0309, ad ♀, CpVv; C: VP0306, ad ♀, CpRlv; D: VP0306, ad ♀, CpVv; E: VP0057, ad ♀, LViv; F: VP0057, ad ♀, RViv; G: VP0332, ad ♀, CpLlv; H: VP0325, ad ♀, CpVv; I: VP0176, ad ♀, LViv; J: VP0176, ad ♀, RViv. Scale bar: 200 µm for A-J.

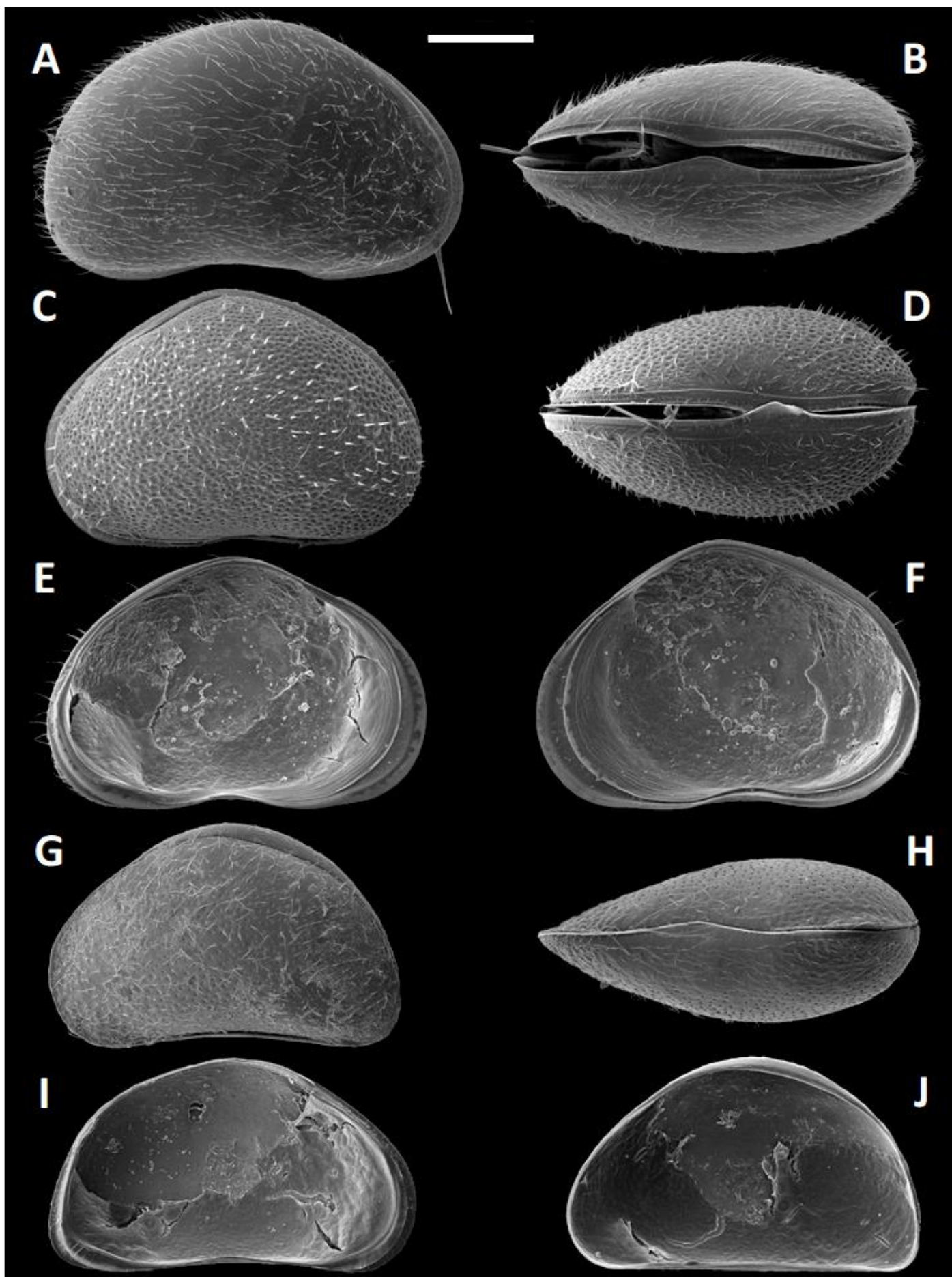


Figure S13. *Heterocypris incongruens*. A: VP0299, ad ♀, CpVv; B: VP0299, ad ♀, CpVv; C: VP1786, ad ♀, CpVv; D: VP1788, ad ♀, CpVv; E: VP0300, ad ♀, CpRlv. Scale bar: 500 µm for A-E.

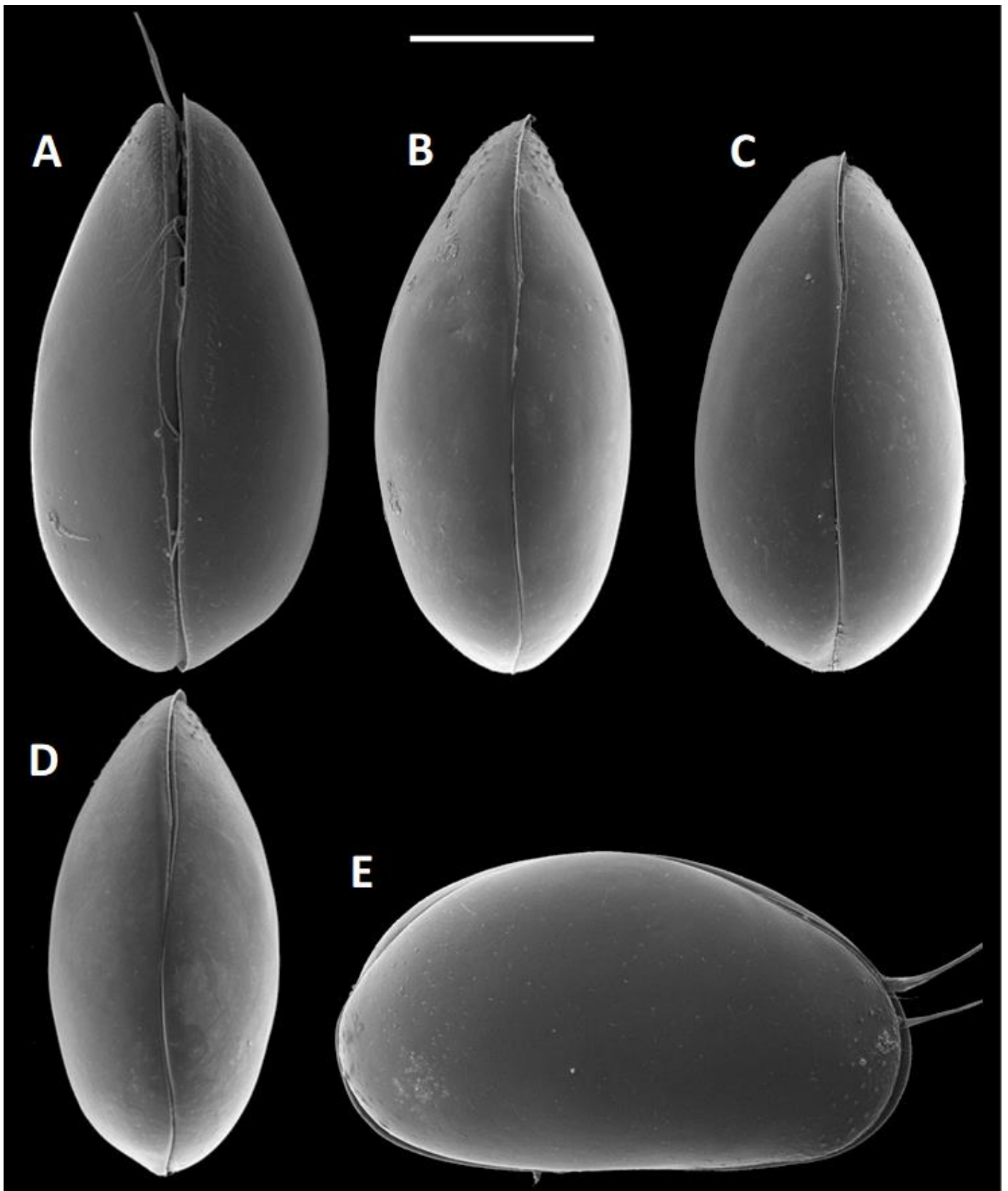


Figure S14. A, B: *Heterocypris incongruens*; C-H: *Heterocypris* spp. A: VP1785, ad ♀, LViv; B: VP1785, ad ♀, RViv; C: VP1593, ad ♀, LViv; D: VP1593, ad ♀, RViv; E: VP1789, ad ♀, LViv; F: VP1789, ad ♀, RViv; G: VP1794, ad ♀, LViv; H: VP1794, ad ♀, RViv. Scale bar: 500 μ m for A-H.

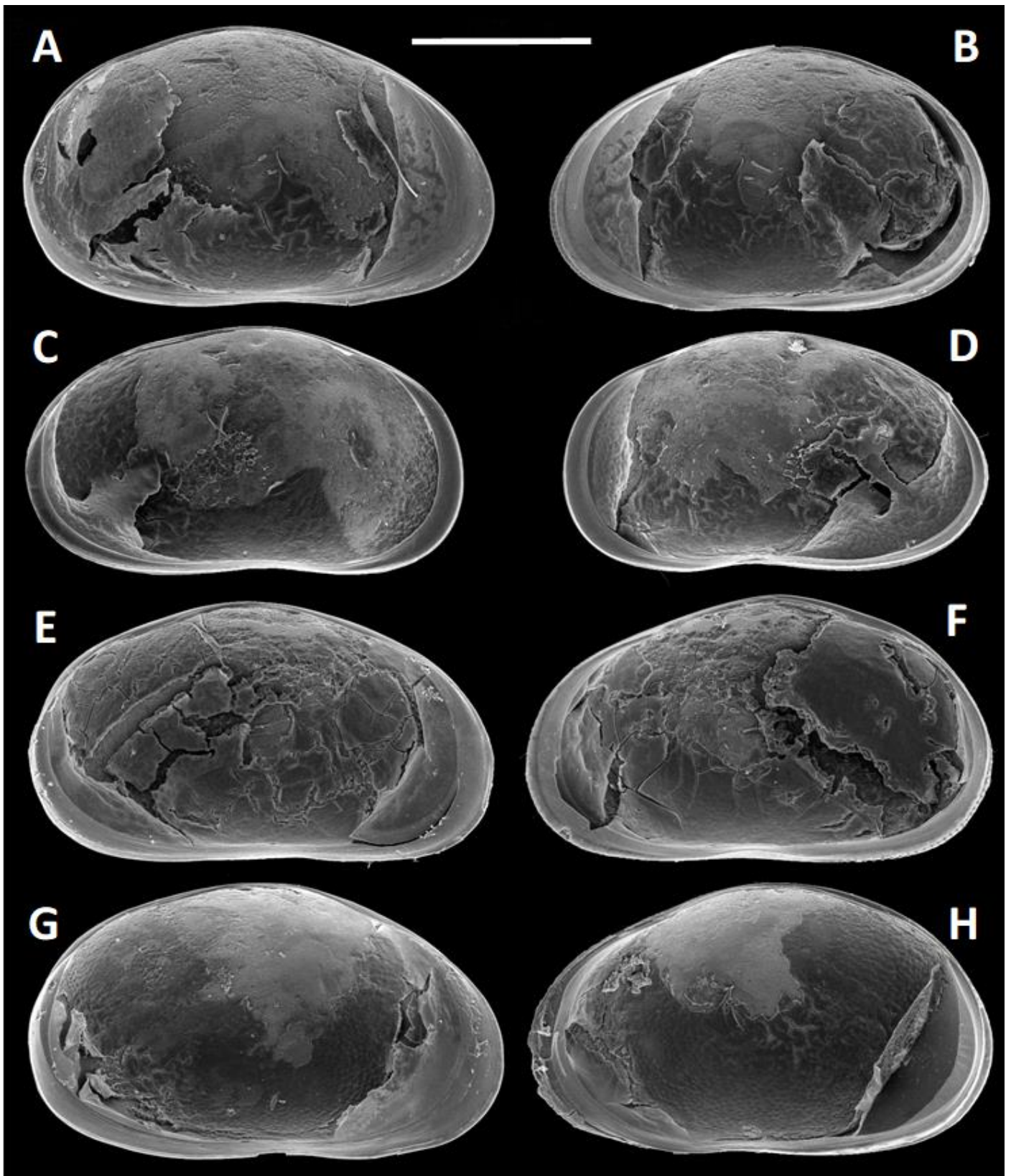


Figure S15. *Heterocypris* sp. 1. A: VP1783, ad ♀, CpVv; B: VP1898, ad ♀, CpVv; C: VP1781, ad ♀, CpVv; D: VP1780, ad ♀, LViv, detail posterior margin; E: VP1780, ad ♀, RViv, detail posterior margin; F: VP1780, ad ♀, LViv; G: VP1780, ad ♀, RViv. Scale bar: 500 µm for A-C; 250 µm for C, D.

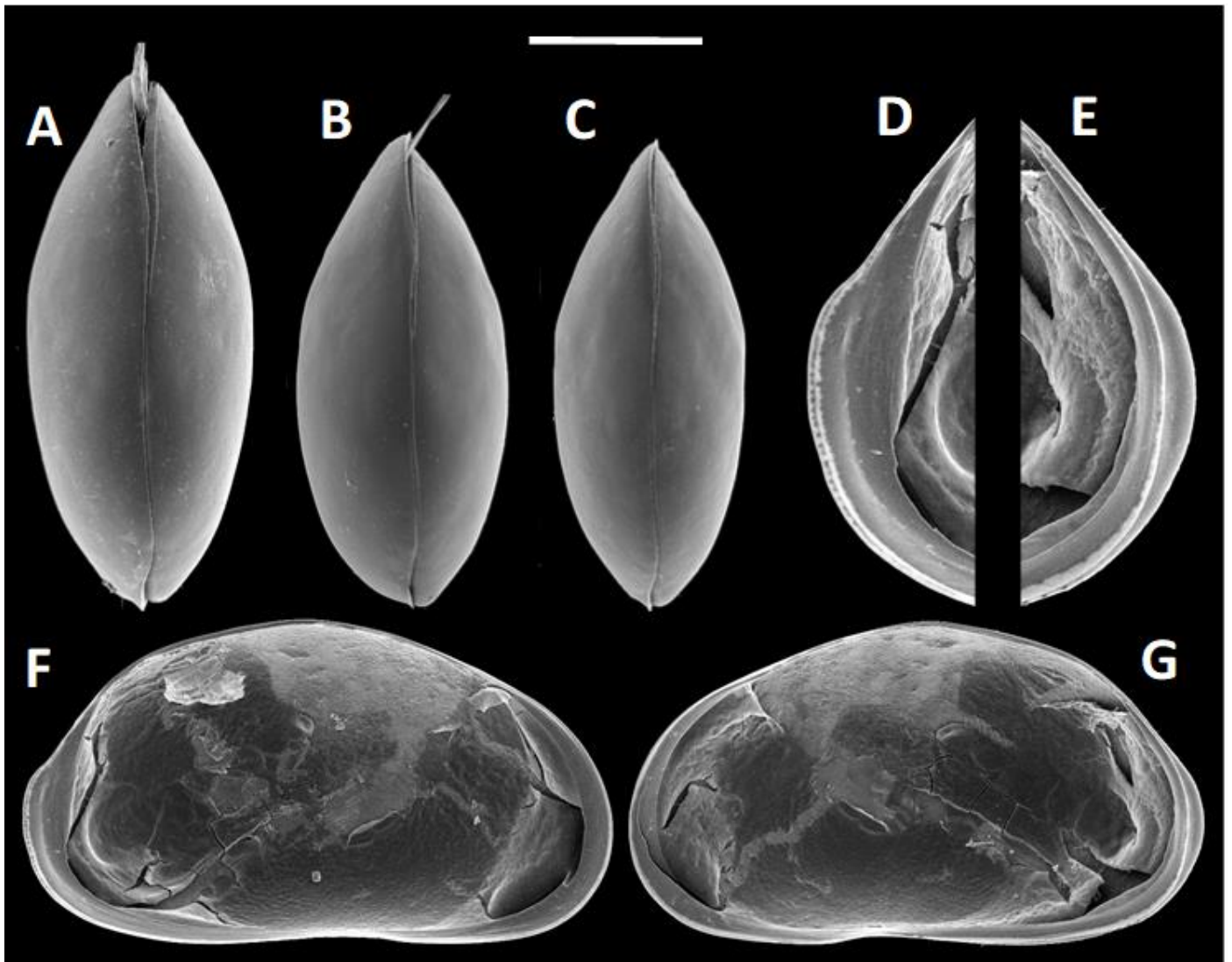


Figure S16. *Eucypris kerkyrensis*. A: VP1552, ad ♀, LViv; B: VP1552, ad ♀, RViv; C: VP1584, ad ♀, LViv; D: VP1584, ad ♀, RViv. Scale bar: 1000 μ m.



Figure S17. *Eucypris virens*. A: VP0811, ad ♀, LViv; B: VP0811, ad ♀, RViv; C: VP0261, ad ♀, LViv; D: VP0261, ad ♀, RViv. Scale bar: 500 μm for A, B; 569 μm for C, D.

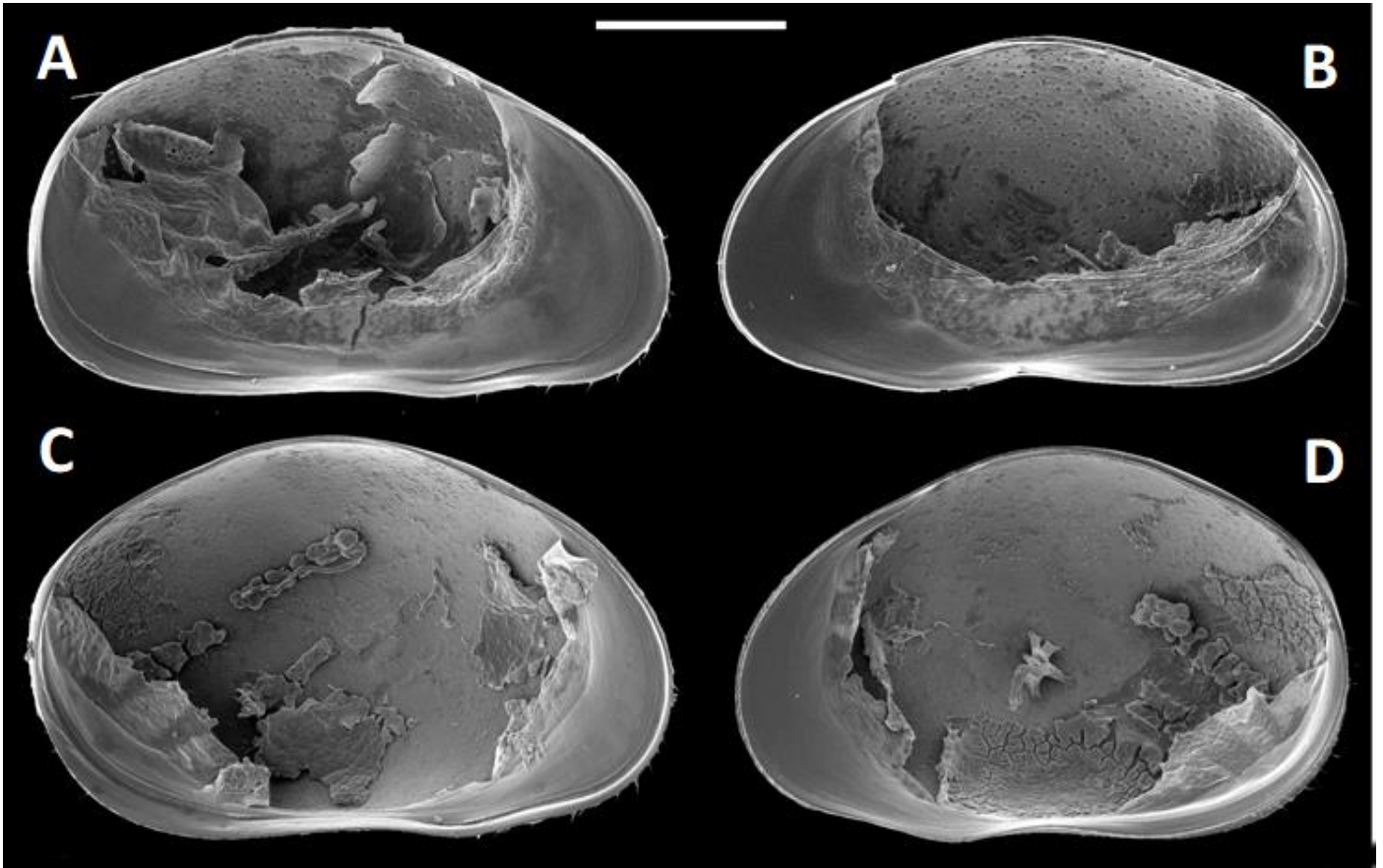


Figure S18. A-D: *Neglecandona lindneri*; E: *Fabeformiscandona* cf. *holzkampfi*. A: VP1617, ad ♀, LViv; B: VP1617, ad ♀, RViv; C: VP1613, ad ♂, LViv; D: VP1613, ad ♂, RViv; E: VP1756, juv, LViv. Scale bar: 500 µm for A-D, 208 µm for E.

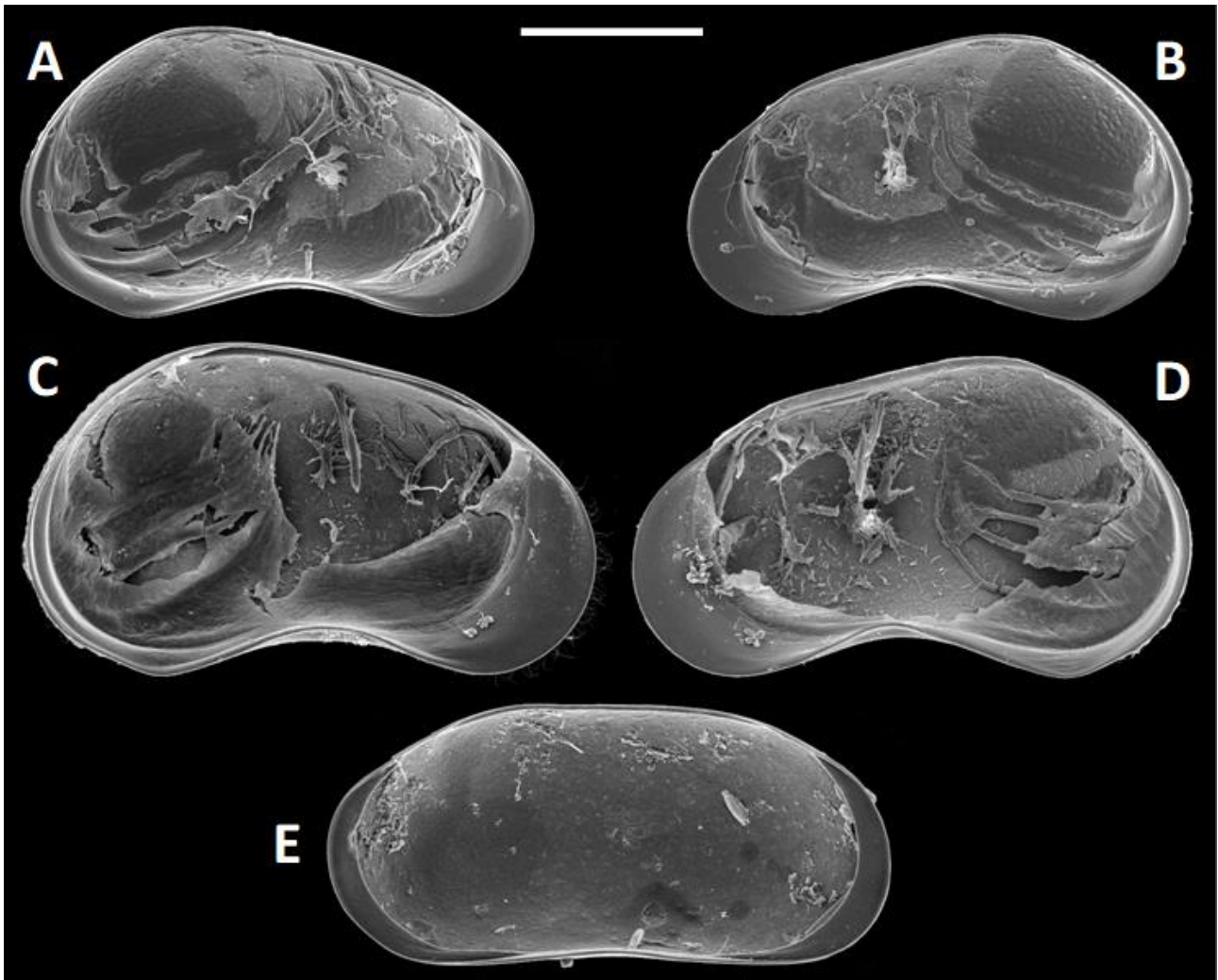


Figure S19. A, B: *Ilyocypris bradyi*; C-F: *Ilyocypris decipiens*; G, H: *Ilyocypris gibba*. A: VP1732, ad ♀, LViv; B: VP1732, ad ♀, RViv; C: VP1679, ad ♀, LViv; D: VP1679, ad ♀, RViv; E: VP1736, ad ♂, LViv; F: VP1736, ad ♂, RViv; G: VP1591, ad ♀, LViv; H: VP1591, ad ♀, RViv. Scale bar: 321 µm for A, B; 500 µm for C, D; 395 µm for E, F; 434 µm for G, H.

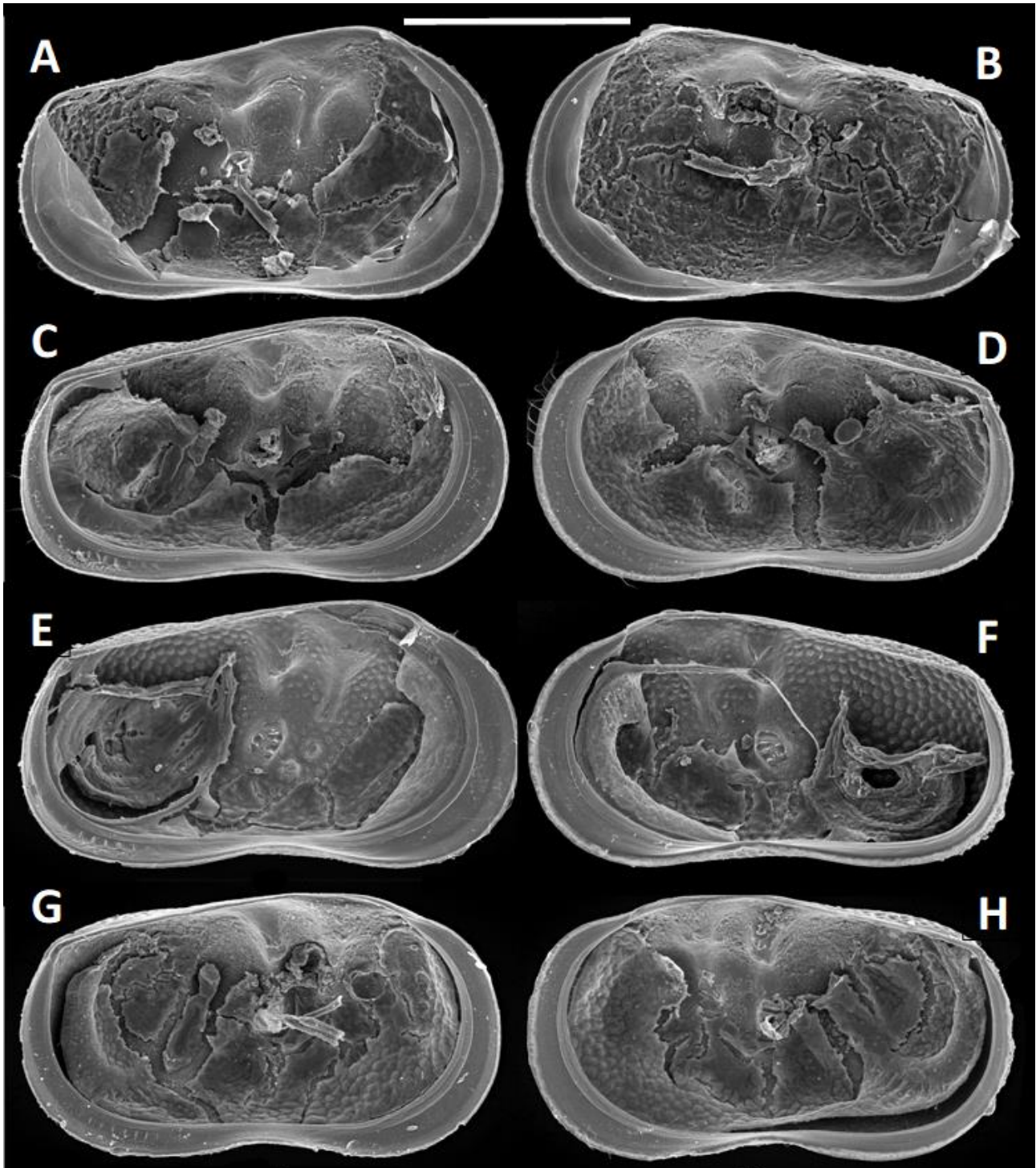


Figure S20. *Ilyocypris getica*. A: VP1666, ad ♀, RVeV; B: VP1666, ad ♀, LVeV; C: VP1665, ad ♀, CpDv; D: VP1702, ad ♀, LViv; E: VP1702, ad ♀, RViv. Scale bar: 500 µm.

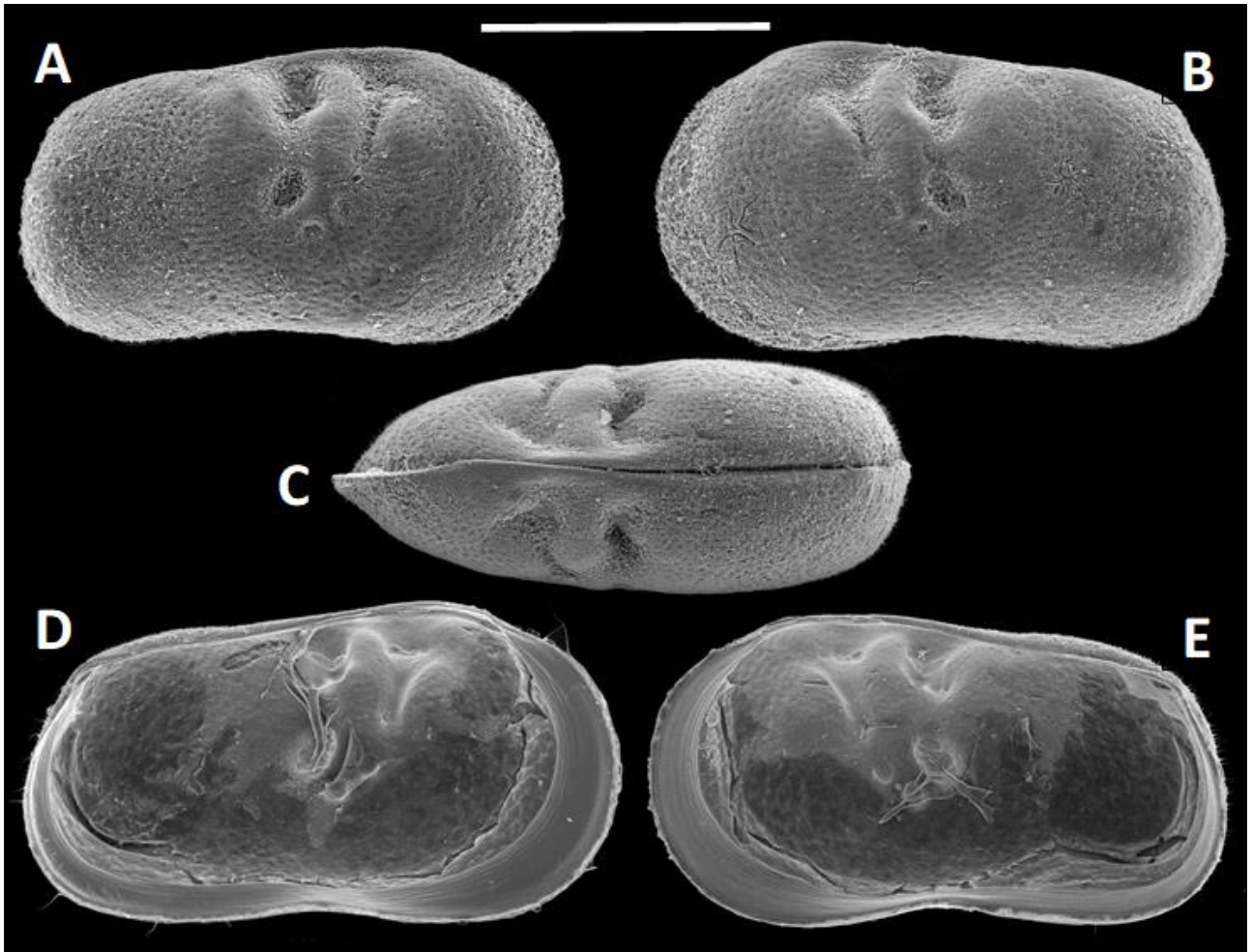


Figure S21. *Tyrrhenocythere amnicola*. A: VP1668, ad ♀, CpLlv; B: VP1672, ad ♀, LViv; C: VP1672, ad ♀, RViv; D: VP1618, ad ♂, LViv; E: VP1618, ad ♂, RViv. Scale bar: 500 µm for A-E.

