



The use of red lentil flour in bakery products: How do particle size and substitution level affect rheological properties of wheat bread dough?

Mia Marchini^a, Eleonora Carini^a, Nicolò Cataldi^a, Fatma Boukid^{a,b}, Massimo Blandino^c, Tommaso Ganino^{a,d}, Elena Vittadini^{a,e,*}, Nicoletta Pellegrini^{a,f}

^a Department of Food and Drug, University of Parma, Parco Area delle Scienze, 47/A, 43124, Parma, PR, Italy

^b Institute of Agriculture and Food Research and Technology (IRTA), Food Safety Programme, Food Industry Area, Finca Camps i Armet s/n, 17121, Monells, Catalonia, Spain

^c Department of Agricultural, Forest and Food Sciences, University of Torino, Largo Braccini 2, 10095, Grugliasco, TO, Italy

^d Consiglio Nazionale delle Ricerche, Institute of BioEconomy (IBE), Via Madonna del Piano, 10 - 50019, Sesto Fiorentino, FI, Italy

^e School of Biosciences and Veterinary Medicine, University of Camerino, Via Gentile da Varano III, 62032, Camerino, MC, Italy

^f Department of Agricultural, Food, Environmental and Animal Sciences, University of Udine, Via Sondrio 2/A, Udine, UD, 33100, Italy

ARTICLE INFO

Keywords:

Bread dough
Red lentil flour
Particle size
Mixolab
Physico-chemical properties

ABSTRACT

Inclusion of pulses flour in bread formulation has important nutritional effects but its successful implementation is challenging and requires a good understanding of the effect of flour functionality, granulometry and substitution level on bread quality. Accordingly, this work studied red lentil flour and its dimensional fractions (coarse, medium, fine, extra-fine), considering compositional, morphological, functional, and thermal properties. Additionally, the effect of substituting wheat flour with lentil flour and its fractions at different levels (0, 10, 15, 20, 25 and 30% [w/w] flour basis) on dough rheology was studied using a Mixolab device, to predict bread quality. Although flour's properties were significantly affected by particle size, multivariate statistics suggested that the substitution level was the major factor affecting rheological properties of doughs made with blends of wheat and lentil flours. A 10% substitution level of wheat flour by lentil flour provides optimum rheological properties regardless of lentil flour particle size, while at higher substitution level (15–30%), a coarse fraction can provide higher performance compared to unfractionated flour and finer fractions. The results of this study pose an important base to intelligently develop wheat-lentil bread applications in the future.

1. Introduction

Pulses are common to culinary traditions worldwide. As a source of carbohydrate, protein, dietary fiber, vitamins, minerals, and phytochemicals, they are important for human nutrition and health, especially among low-income populations (Boukid, Zannini, Carini, & Vittadini, 2019; Bresciani & Marti, 2019; Foschia, Horstmann, Arendt, & Zannini, 2017). Beside their environmental sustainability, interest in adding pulses to food products is rising, since consumers are increasingly health- and environment-conscious (FAO 2019; Malcolmson, Boux,

Bellido, & Frohlich, 2013).

Pulse flour has been used frequently to nutritionally enhance food products, including bread, as a functional ingredient, to partially substitute wheat flour (Borsuk, Arntfield, Lukow, Swallow, & Malcolmson, 2012; Bresciani & Marti, 2019; Foschia et al., 2017; Melini, Melini, Luziatelli, & Ruzzi, 2017; Sozer, Holopainen-Mantila, & Poutanen, 2017). Among pulses, lentils (*Lens culinaris* Medik.) are widely used in baking because of their mild taste and protein functionality (Joshi, Timilsena, & Adhikari, 2017). Notwithstanding its nutritional benefits, use of pulse flour in breadmaking is hampered by unavoidably poorer

Abbreviations: PS, particle size; SL, substitution level; red lentil flours – L, unfractionated; EFL, extra-fine; FL, fine; ML, medium; CL, coarse; STD, common wheat flour Type 00; d. b., dry basis; w. b., wet basis; alveographic parameters - W ($J 10^{-4}$), baking strength; P/L ratio, curve configuration ratio; P (mm), dough tenacity; L (mm), dough extensibility; R/T, room temperature; WHC, water holding capacity; OHC, oil holding capacity; S_p , swelling power; DSC, differential scanning calorimeter; ΔH , enthalpy; T_{on} , onset temperature; T_p , peak temperature; T_{off} , offset temperature; WA, water absorption; ANOVA, analysis of variance.

* Corresponding author. School of Biosciences and Veterinary Medicine, University of Camerino, via Gentile da Varano III, 62032, Camerino, MC, Italy.

E-mail addresses: mia.marchini@unipr.it (M. Marchini), eleonora.carini@unipr.it (E. Carini), nicolo.cataldi@studenti.unipr.it (N. Cataldi), fatma.boukid@irta.cat (F. Boukid), massimo.blandino@unito.it (M. Blandino), tommaso.ganino@unipr.it (T. Ganino), elena.vittadini@unicam.it (E. Vittadini), nicoletta.pellegrini@uniud.it (N. Pellegrini).

<https://doi.org/10.1016/j.lwt.2020.110299>

Received 20 July 2020; Received in revised form 30 August 2020; Accepted 24 September 2020

Available online 29 September 2020

0023-6438/© 2020 Elsevier Ltd. This is an open access article under the CC BY-NC-ND license (<http://creativecommons.org/licenses/by-nc-nd/4.0/>).

finished products' quality (Bresciani & Marti, 2019; Monnet, Laleg, Michon, & Micard, 2019), which may depend on the level of inclusion in the product formulation as well as its functional characteristics, e.g., granulometry.

Flour granulometry has recently gained much attention as a mean to modulate flour functionality and control nutrients bioaccessibility, in respect to the relationship between degree of grinding and preservation of cell structural integrity. Fine particle size is generally associated with more cell rupture and release of cell components, while larger flour granulometry assures better preservation of cell integrity that hinders the action of digestive enzymes (Boukid et al., 2019a; Lin et al., 2020; Pellegrini, Vittadini, & Fogliano, 2020; Rovalino-Córdova, Fogliano, & Capuano, 2019). More extensive milling (500 μm flour granulometry) was associated to greater starch damage, lower water absorption capacity, and higher peak and final viscosities in lentil flour compared to coarser fractions (790, 1000, 1270 μm ; Bourré et al., 2019). A general increase in total starch and a decrease in protein content, bulk density and oil holding capacity with the decrease in particle size (210, 149, 105 and 74 μm) were found by comparing two lentil flours (Indian cv. L-4076 and Turkish cv. Çiftçi), while the pasting and thermal properties were dependent on flour particle size and cultivar (Ahmed, Taher, Mulla, Al-Hazza, & Luciano, 2016). In bakery applications, the use of 500 μm lentil flour (20% wheat flour substitution) was found to produce a firmer bread compared to the one made with coarser fractions (790, 1000, 1270 μm ; Bourré et al., 2019), while fine lentil flour (~17 μm , 75% wheat flour substitution) was reported to yield to a softer wheat-based pita bread if compared to a coarser flour (~190 μm ; Borsuk et al., 2012). Furthermore, from a nutritional perspective, a positive association between the use of rich-in-intact-cells lentil flour fractions (>200 μm) and reduced *in vitro* starch digestibility of derivatives has been reported (Kathirvel, Yamazaki, Zhu, & Luhovyy, 2019).

To the authors' best knowledge, no reports are available in the literature on the combined effect of particle size and substitution level on wheat bread dough rheology, a basic knowledge that can greatly help predicting, improving, and understanding the bread making process. Consequently, the objective of the present study was to evaluate the effect of particle size (PS), resulting from roller milling process followed by sieving fractionation, on compositional, functional, and thermal properties of red lentil flour compared to common wheat flour, and to investigate the impact of PS and substitution level (SL) on wheat dough rheology using a Mixolab device to predict the product quality in the baking process.

2. Materials and methods

2.1. Raw materials

Unfractionated red lentil flour (L) was kindly provided by Molino Martino Rossi SpA (Gadesco Pieve Delmona, CR, Italy), and was produced by subjecting dehulled red lentils to roller milling.

Common wheat flour Type 00 [ashes ≤ 0.55 dry basis (d. b.); protein $\geq 9\%$ d.b., moisture $\leq 14.5\%$ wet basis (w. b.); $W = 376 \cdot 10^{-4}$ J and $P/L = 0.62$ (Molino Agugiario & Figna, Collecchio, PR, Italy)] was used as a control (STD).

2.2. Flour fractionation

Flours were fractionated using a Giuliani Tecnologie Sieve (IG-GLOBE 300 rpm). 100 g flour was sieved for 40 min through certified 22-mesh (200 μm), 23-mesh (160 μm), and 25-mesh (100 μm) test sieves (Giuliani Tecnologie, Italy). Lentil flour fractions were named as extra-fine (EFL, <100 μm), fine (FL, 100–160 μm), medium (ML, 160–200 μm), and coarse (CL, >200 μm).

2.3. Physicochemical characterization of flours

2.3.1. Proximate composition

Flour samples were analyzed for total protein (%N $\times 5.70$, AACCI method 46–12.01), lipid (%), AACCI Method 30–25.01), and ash (%), AACCI method 08–01.01) contents. Dry matter was determined by oven drying for 1 h to constant weight at 130 °C (adapted from AACCI method 44–15.02), and carbohydrates were determined by difference, and compositional data expressed as % (g/100 g). Analyses were performed in duplicate and results were expressed as mean \pm standard deviation.

2.3.2. Water holding capacity (WHC) and oil holding capacity (OHC)

WHC and OHC were determined following Nguyen, Mounir, and Allaf (2015), with modifications. Briefly, 100.0 \pm 0.5 mg flour were mixed with 1.0 mL distilled water (WHC) or sunflower oil (OHC), vortexed for 30 s, then left for 30 min at R/T. Mixtures were centrifuged at 2061 g (4000 rpm) for 20 min (Eppendorf 5810 R, Germany), and the supernatant decanted. WHC and OHC were calculated as the ratio between grams of water or oil retained per gram of solid. Results were expressed as mean \pm standard deviation of three replicates.

2.3.3. Swelling power (S_p)

S_p was measured following the method described by Yadav and colleagues (Yadav et al., 2012), with modifications. Suspensions (2% w/v) were heated 60, 70, 80 and 90 °C for 1 h, cooled at 30 °C for 30 min and were then centrifuged at 8243 g (8000 rpm) for 20 min. The weight of the resulting pellet was determined. S_p was calculated as the ratio between sediment and fresh sample weights. Values were reported as mean \pm standard deviation of three replicates.

2.4. Thermal properties

Thermal properties were measured using a differential scanning calorimeter (DSC, Q100 TA Instruments, USA), calibrated with indium and mercury. Distilled water was added to flour in a 3:1 ratio and equilibrated overnight at R/T. Samples were prepared placing 5–10 mg of water-flour suspension in stainless steel pans (PerkinElmer, USA) hermetically sealed, quench-cooled to 30 °C, then heated to 100 °C at 5 °C/min, using an empty pan as reference. Enthalpy (ΔH , J g⁻¹), onset (T_{on} , °C), peak (T_p), and offset (T_{off} , °C) transition temperatures were obtained from heat flow curves using Universal Analysis Software, Version 4.5 A (TA Instruments, USA). Data were expressed as three replicate averages for each flour sample.

2.5. Optical microscopy

Size and distribution of single or grouped cells in lentils fraction were examined by optical microscopy (DM 4000 B, Leica, Germany). Flour particles on a slide under a coverslip were stained with toluidine blue (0.1%). Three slides were analyzed for each flour. Multiple images of cells (5) and cell agglomerates (15) were taken (Leica DMC2900, Germany) at magnification 20 \times and 5 \times respectively. Cell aggregate areas were measured using Leica Imaging software (IM50 Version 4.1).

2.6. Rheology

The impact of lentil flour PS and SL on the rheological properties of wheat-flour-based dough was studied using a Mixolab (Chopin, Tripette et Renaud, France) and AACC 54–60.01 and Chopin + protocol (Table 1; 75 g dough samples). STD was enriched with L or its fractions (CL, ML, FL, EFL) at 0, 10, 15, 20, 25 and 30% (w/w).

Mixolab software was used to measure Water absorption (WA, %); initial target consistency C1 (Nm); torque at the end of the holding time at 30 °C (C1.2, Nm); minimum torque C2 (Nm); peak torque C3 (Nm); stability of hot-formed gel C4 (Nm); final torque C5 (Nm) measured after cooling at 50 °C. Temperatures (T_p , °C) and time (min) upon the

Table 1
Settings used in Mixolab Chopin + protocol and Mixolab recorded curve.

Chopin + protocol		Mixolab Output
Parameter	Value	
Mixing speed	80 rpm	
Dough weight	75 g	
Tank temperature	30 °C	
Temperature 1st step	30 °C	
Duration 1st step	8 min	
Temperature 2nd step	90 °C	
1st temperature gradient	4 °C/min	
Duration 2nd step	7 min	
2nd step gradient	-4 °C/min	
Temperature 3rd step	50 °C	
Duration 3rd step	5 min	
Total analysis time	45 min	

appearance of different types of torque were also recorded. In addition, stability (resistance to kneading) and amplitude (elasticity) were measured as software outputs. Analyses were run in duplicate.

2.7. Statistical analyses

One-way ANOVA and Duncan's *post-hoc* test were performed to determine the effect of particle size on physicochemical and rheological properties. Two-way ANOVA was used to determine the impact of PS and SL on dough rheology. All statistical analyses were performed at 0.05 significance level using SPSS Statistical Software (Version 25.0, IBM SPSS Inc., USA).

3. Results and discussion

3.1. Characterization of lentil flour and its fractions

Particle mass distribution (%) of STD, L and L fractions are reported in Table 2, and indicate that lentil flour contained a higher amount of larger particles as compared to STD. STD had significantly higher carbohydrates (74.73 ± 0.32%) and moisture content (10.78 ± 0.03%), but lower protein (12.62 ± 0.37%) and ash (0.33 ± 0.01%) than L and its fractions (Table 2), as expected (Boukid, Zannini, Carini, & Vittadini, 2019). STD fat content (1.54 ± 0.01%) was similar to CL. Proximate composition of all lentil flours are in concordance with the findings of Hall, Hillen, and Garden Robinson (2017). Among the different fractions, CL showed significantly lower protein and higher carbohydrate content. Fat and protein content were inversely related to PS, while carbohydrate and moisture content decreased slightly with PS decrease. Ash content decreased with PS reduction, conceivably due to mineral association with starch granules of CL fractions, as postulated by Shafi, Baba, and Masoodi (2017).

Table 2
Particle size distribution (%) and proximate composition (g/100 g) of analyzed flour samples.

	Particle mass distribution (%)				Proximate composition (g/100 g)				
	<100 μm	160-100 μm	200-160 μm	>200 μm	Carbohydrates	Protein	Fat	Moisture	Ash
L	19%	19%	20%	42%	62.42 ± 0.27c	24.13 ± 0.38a	1.10 ± 0.02e	9.96 ± 0.12c	2.39 ± 0.01c
CL				100%	64.63 ± 0.24b	21.21 ± 0.23b	1.54 ± 0.01d	10.18 ± 0.03b	2.44 ± 0.00b
ML			100%		62.06 ± 0.24cd	23.64 ± 0.25a	1.83 ± 0.01c	10.01 ± 0.00c	2.46 ± 0.00a
FL		100%			61.95 ± 0.08d	24.03 ± 0.01a	1.87 ± 0.01b	9.71 ± 0.11d	2.44 ± 0.00b
EFL	100%				61.95 ± 0.02d	24.06 ± 0.00a	2.09 ± 0.03a	9.57 ± 0.02e	2.33 ± 0.00d
STD	72%	22%	5%	1%	74.73 ± 0.32a	12.62 ± 0.37c	1.54 ± 0.01d	10.78 ± 0.03a	0.33 ± 0.01e

L, unfractionated red lentil flour; CL, coarse lentil flour; ML, medium lentil flour; FL, fine lentil flour; EFL, extra-fine lentil flour; STD, common wheat flour. Proximate composition values are expressed as mean ± SD (n = 2). Values followed by different letters in each column are significantly different (P ≤ 0.05).

3.2. Optical microscopy

Morphology of lentil flour fractions components (cell aggregates, cells, starch granules) was observed under optical microscopy (Fig. 1). Lentil starch granules were elliptical to round, with a central elongated or starred hilum (Fig. 1) as previously reported (Joshi et al., 2017). Average cell aggregate areas decreased significantly with decreasing flour PS, as previously reported (Boukid et al., 2019a). Specifically, cell aggregate areas decreased as follows: CL (≈144,000 μm²) > ML (≈90,000 μm²) > FL (≈50,000 μm²) > EFL (≈7000 μm²).

Cell aggregates prevalently consisted of intact rather than fractured cells in CL (Fig. 1a and Fig.1b), both intact and fractured cells in ML (Fig. 1c and Fig.1d), free starch granules and cell wall fragments in FL (Fig. 1e and Fig.1f), prevalently free starch granules and fragmented cell walls in EFL (Fig. 1g and Fig.1h). This is particularly significant because of the relationship between flour structural attributes and the response of its constituents to processing (shear, temperature, and time) and their functional and nutritional properties in dough and final product (Boukid et al., 2019a; Pellegrini, Vittadini, & Fogliano, 2020).

3.3. Water holding capacity, oil holding capacity, and swelling power

WHC defines ability to hold water against gravity and it is an important parameter for breadmaking functionality, as a high water incorporation in dough (high WHC) improves bread's properties (Jarpa-Parra, 2018; Ma et al., 2011).

STD showed WHC (1.02 g/g, Table 3) within the range previously identified for wheat gluten (Wang, Zhao, Yang, & Jiang, 2006), while WHC for L flours ranged between 1.18 g/g and 1.85 g/g (Table 3), concordantly with previous studies (L'Hocine, Boye, & Arcand, 2006; Lee, Htoon, Uthayakumaran, & Paterson, 2007; Boye, Zare, & Pletch, 2010). For L samples, the highest WHC were in L, CL, and ML, while FL

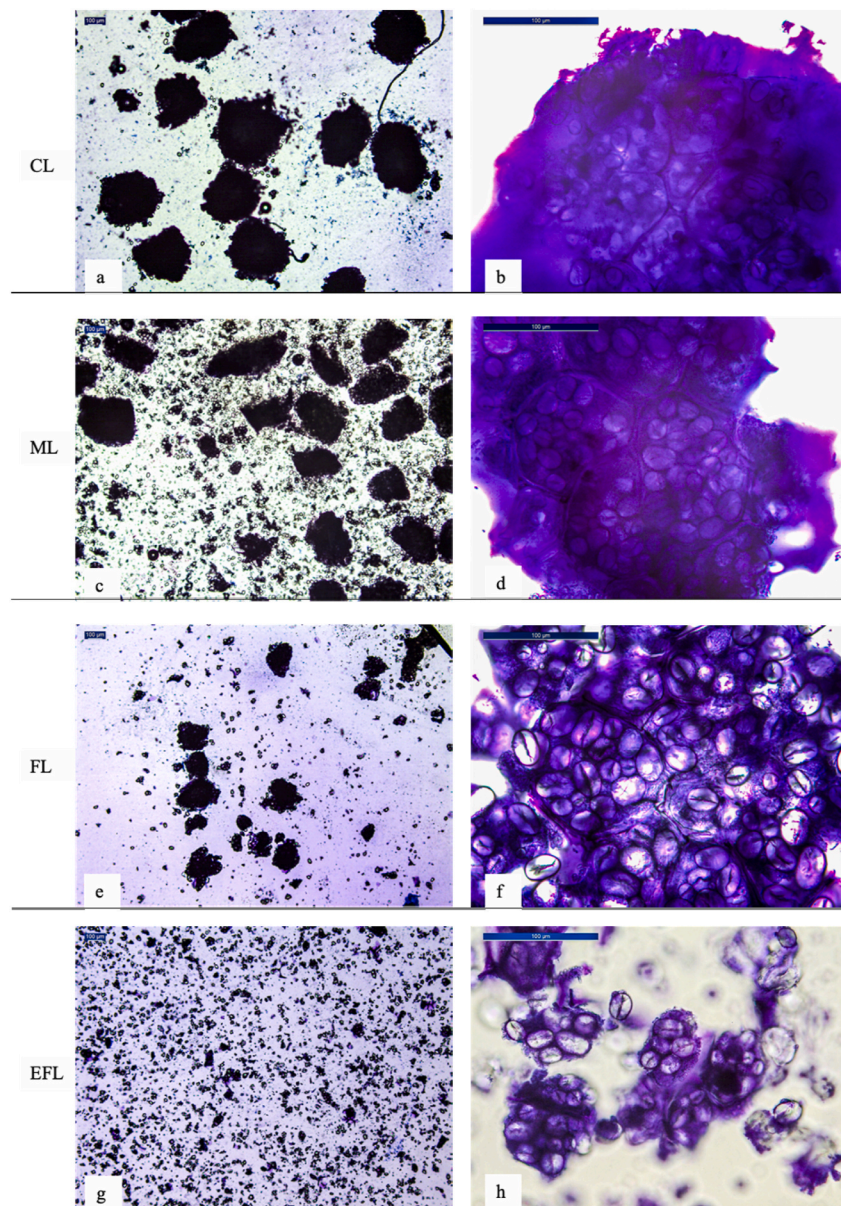


Fig. 1. Cell aggregates morphology (a, c, e, g; magnified 5 \times) and cells morphology (b, d, f, h; magnified 20 \times) in red lentils flour fractions using optical microscope. CL, coarse lentils flour; ML, medium lentils flour; FL, fine lentils flour; EFL, extra-fine lentils flour. (For interpretation of the references to colour in this figure legend, the reader is referred to the Web version of this article.)

was significantly lower (1.50 g/g) as was EFL (1.18 g/g). The WHC decrease for finest particles could be attributed to the lower carbohydrates, higher protein and fat contents and potentially higher starch damage compared to the coarser fractions, in agreement with literature (Aguilera, Esteban, Benitez, Molla, & Martin-Cabrejas, 2009; Lin et al., 2020; Luhovyy, Hamilton, Kathirvel, & Mustafaalaaafin, 2017; Robertson et al., 2000).

OHC is an important property in bakery products when fat absorption is desirable for flavor retention, palatability, and shelf-life extension (Adebowale & Lawal, 2004). Regarding OHC (Table 3), no significant differences were found between wheat and lentil flours, except for CL which had a lower OHC. This may be explained by its protein content and, therefore, lower lipophilic tendency (Bolade, Adeyemi, & Ogunsua, 2009; Walde, Tummala, Lakshminarayan, & Balaraman, 2005).

S_p defines the water absorbed and trapped in the gel network created by starch granule hydrogen bonds during heating and stirring in excess of water (Li et al., 2014). At low temperatures, thermal energy swells starch granules without disruptions; greater thermal energy with

temperature increases induces crystalline structure breakdown and increased S_p (Li et al., 2014). In all samples, S_p increased with rising temperature until 80 °C, and then remained constant as previously reported (Boukid et al., 2019a; Chung et al., 2008).

Among samples, STD showed a greater S_p increase with rising temperatures, reaching values notably higher than those of L and its fractions at 90 °C. Overall, despite higher free amylose content and lower lipid-amylose complexes in pulses compared to cereals, S_p is lower in pulses than in cereals. Wani et al. (2016) related this behavior to a greater degree of amylose and amylopectin interactions which, in turn, prevent starch molecules from releasing amylose during gelatinization. Overall, S_p depends on several factors, e.g., starch and cultivar sources, amylose/amylopectin ratio, size, morphology and ultrastructure of starch granules and cell wall intactness, temperature, and pH (Boukid et al., 2019a; Wani et al., 2016).

Considering PS, S_p of lower PS fractions (ML, FL, EFL) was significantly higher than the whole and coarser fractions. The presence of fractured cells and free starch granules in ML, FL, and EFL, as discussed

Table 3

Effects of particle size on water holding capacity, oil holding capacity and swelling power of red lentil flour, its fractions and wheat flour.

	WHC	OHC	S_p (g/g)					
	(g/g)	(g/g)	25 °C	25 °C	60 °C	70 °C	80 °C	90 °C
L	1.68 ± 0.04a	0.71 ± 0.04a	5.87 ± 0.17abC	6.87 ± 0.59bcB	8.56 ± 0.38abA	8.13 ± 0.29dA		
CL	1.73 ± 0.12a	0.63 ± 0.04b	5.17 ± 0.3bC	6.73 ± 0.72cB	8.39 ± 0.41abA	8.29 ± 0.27cdA		
ML	1.85 ± 0.07a	0.71 ± 0.07a	5.23 ± 0.08abC	7.24 ± 0.43abcB	8.93 ± 0.23abA	9.08 ± 0.14bcA		
FL	1.50 ± 0.18b	0.77 ± 0.04a	6.01 ± 0.41aC	7.69 ± 0.43abcB	9.09 ± 0.38aA	9.38 ± 0.57bA		
EFL	1.18 ± 0.03c	0.76 ± 0.04a	5.40 ± 0.43abC	7.85 ± 0.32abB	8.77 ± 0.64abAB	9.65 ± 0.29bA		
STD	1.02 ± 0.02c	0.79 ± 0.03a	5.89 ± 0.63abC	8.19 ± 0.57aB	8.32 ± 0.27bB	10.80 ± 0.63aA		

WHC, water holding capacity; OHC, oil holding capacity; S_p , Swelling Power; L, unfractionated red lentil flour; CL, coarse lentil flour; ML, medium lentil flour; FL, fine lentil flour; EFL, extra-fine lentil flour; STD, common wheat flour. Values are expressed as mean ± SD (n = 3). For S_p , values followed by different lowercase letters in each column are significantly different ($P \leq 0.05$). Values followed by different capital letter in each row are significantly different ($P \leq 0.05$).

in the optical microscopy section, may explain the higher S_p .

3.4. Thermal properties

DSC thermograms and thermal properties of the studied flours are reported in Fig. 2 and Table 4, respectively. Wheat flour showed a unique thermal transition at 53–75 °C related to starch gelatinization. Instead, two endothermic peaks were evident for L flour and its fractions (Fig. 2). The first peak (55–80 °C) was attributed to starch gelatinization, while the 80–96 °C transition was previously related to amylose-lipid complexes melting or protein denaturation (Ahmed et al., 2016; Barbana & Boye, 2013; Chung et al., 2008; Zeng, Gao, & Li, 2014). The starch gelatinization peak shifted to higher temperatures in L than in STD, suggesting higher energy to initiate starch gelatinization in lentil

flours. The different gelatinization properties of cereals vs. pulses are likely attributable to several factors such as crystallinity, starch granule size, intermolecular bonding, and others (Ai & Jane, 2018). Moreover, DSC thermograms showed the gelatinization event starting with a minor peak in L samples, indicating that, although the majority of lentil flour starch gelatinizes at higher temperature than STD, a small fraction of starch has a tendency to gelatinize at a lower temperature.

Considering gelatinization peaks in L samples, CL showed the lowest T_{on} (≈ 55 °C) among all the samples which were comparable (≈ 57 °C), whereas T_p was lowest in L (≈ 69 °C) and highest in EFL (≈ 70 °C). T_{off} occurred at 79–81 °C in all L flours. Gelatinization enthalpy of STD (≈ 2.00 J g⁻¹) and lentil flours was significantly different only in L (≈ 1.50 J g⁻¹) and FL (≈ 1.40 J g⁻¹). Thermal parameters of the second endothermic peak (T_{on} , T_p , T_{off} and ΔH) were not significantly different as a function of lentil flour PS (Table 4). Overall, PS did not affect lentil flour endothermic events, as observed by Boukid et al. (2019a).

3.5. Rheology

To deem lentil flours suitable for breadmaking, composite wheat/lentil flour blends at different SLs were formulated, and dough rheology measured. The Mixolab protocol used (Table 1) simulated the bread-making process and explored dough's thermo-mechanical behavior under mixing and temperature stress. Additionally, Mixolab data provide information on protein quality (strength), starch behavior (gelatinization, stability and retrogradation) during heating and cooling, enzymatic activity, and their combined effects (Dubat, 2010; AACC 54–60.01).

Table 5 shows the effect of PS, SL, and their interactions (PS x SL) on each Mixolab parameter using 2-way ANOVA. Based on statistical analyses (F significance level and sum square percent of factors studied), PS did not significantly affect C1_t (maximum torque at 30 °C) nor the time to attain C2, C3, C4 and C5. In contrast, PS significantly ($P \leq 0.05$) affected most torque [C1.2 (Nm, 5.07%), C2 (Nm, 8.84%); C3 (Nm, 10.97%); C5 (Nm, 5.62%)], but showed no significant effect on torque temperature and amplitude. Moreover, PS effects on stability (4.47%) and WA (0.95%) were low.

Investigating further using 2-way ANOVA, the results showed that

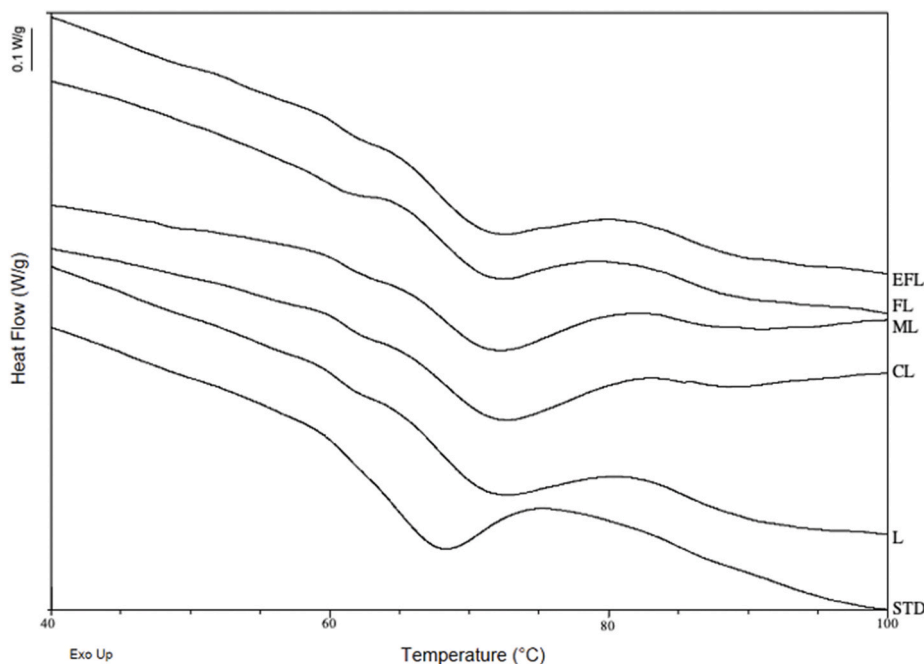


Fig. 2. Representative DSC thermograms of STD, L flour and its fractions (LC, LM, LF and LEF) in the range 40–100 °C. STD, common wheat flour; L, unfractionated red lentil flour; CL, coarse lentil flour; ML, medium lentil flour; FL, fine lentil flour; EFL, extra-fine lentil flour.

Table 4
Thermal properties of unfractionated red lentil flour and fractions compared to wheat flour.

	First endothermic peak				Second endothermic peak			
	T _{on} (C°)	T _p (C°)	T _{off} (C°)	ΔH (J g ⁻¹)	T _{on} (C°)	T _p (C°)	T _{off} (C°)	ΔH (J g ⁻¹)
L	57.76 ± 0.39a	69.22 ± 0.12 b	79.12 ± 0.67b	1.51 ± 0.32b	80.35 ± 0.47b	87.02 ± 1.14a	95.70 ± 0.82a	0.38 ± 0.14a
CL	55.49 ± 0.41b	69.75 ± 0.17ab	80.01 ± 0.74ab	1.77 ± 0.38ab	80.80 ± 0.47b	86.32 ± 0.39a	95.10 ± 0.62a	0.25 ± 0.04a
ML	57.07 ± 0.16a	69.47 ± 0.2 ab	81.01 ± 0.74a	2.19 ± 0.12a	82.22 ± 1.06a	86.71 ± 1.94a	95.89 ± 0.91a	0.23 ± 0.04a
FL	57.3 ± 0.79a	69.58 ± 0.22ab	79.30 ± 1.88ab	1.4 ± 0.19b	80.70 ± 0.26b	87.01 ± 0.98a	94.81 ± 2.27a	0.28 ± 0.12a
EFL	57.41 ± 0.57a	70.04 ± 0.71a	79.64 ± 0.37ab	1.75 ± 0.29ab	81.57 ± 0.67ab	86.83 ± 0.64a	93.71 ± 0.54a	0.23 ± 0.04a
STD	52.99 ± 1.07c	65.83 ± 0.28c	75.05 ± 0.54c	2.02 ± 0.14a	–	–	–	–

L, unfractionated red lentil flour; CL, coarse lentil flour; ML, medium lentil flour; FL, fine lentil flour; EFL, extra-fine lentil flour; STD, common wheat flour. Values are expressed as mean ± SD (n = 3). Values followed by different lowercase letters in each column are significantly different (P ≤ 0.05).

Table 5
F significance level and sum square percent of the studied factors (i.e., particle size and substitution level) and their combinations on Mixolab parameters.

Factors	Particle size (PS)		Substitution level (SL)		PS x SL	
	SS%	Significance	SS%	Significance	SS%	Significance
C1_t (min)	1.56	ns	96.71	***	1.73	ns
C2_t (min)	0.50	ns	96.58	***	2.92	ns
C3_t (min)	8.85	ns	53.86	***	37.29	*
C4_t (min)	4.66	ns	52.28	***	43.06	ns
C5_t (min)	11.11	ns	28.40	*	60.49	ns
C1.2 (Nm)	5.07	***	91.28	***	3.65	***
C2 (Nm)	8.84	***	83.29	***	7.87	***
C3 (Nm)	10.97	*	53.28	***	35.75	*
C4 (Nm)	9.34	ns	72.58	*	18.08	ns
C5 (Nm)	5.62	***	68.62	***	25.76	***
C1_tp (°C)	8.49	ns	34.17	*	57.34	ns
C2_tp (°C)	1.22	ns	89.12	***	9.66	ns
C3_tp (°C)	5.87	ns	24.47	ns	69.66	ns
C4_tp (°C)	11.87	ns	15.28	ns	72.85	ns
C5_tp (°C)	5.78	ns	44.44	*	49.78	ns
Amplitude (Nm)	3.11	ns	77.66	***	19.23	ns
Stability (min)	4.47	***	93.93	***	1.60	***
WA (%)	0.95	***	97.99	***	1.06	***

WA, water absorption; ns not significant; SS sum of square. *P ≤ 0.05, **P ≤ 0.01, ***P ≤ 0.001.

almost all Mixolab parameters were controlled by SL, which had the highest influence on torque times [C1_t (96.71%); C2_t (96.58%); C3_t (53.86%); C4_t (52.28%); C5_t (28.40%)], torque [C1.2 (91.28%); C2 (83.29%); C3 (53.28%); C4 (72.58%); C5 (68.62%)], and above all torque temperature [C1 (34.14%); C2 (89.12%); C5 (44.44%)]. Similarly, SL greatly influenced the doughs' elasticity (77.66%), stability, (93.93%) and water absorption (97.99%) of the doughs. Considering PS and SL simultaneously, a smaller synergic contribution was found in the Mixolab data, compared to the two factors taken independently. Multivariate analyses confirmed PS and SL interactions which significantly (P ≤ 0.05) affected C3_t (37.29%), torque values except for C4 [C1.2 (Nm, 3.65%); C2 (Nm, 7.87%); C3 (Nm, 35.75%); C5 (Nm, 26.76%)], stability (1.60%) and WA (1.06%), with a modest effect on C3, C3_t and C5.

Such findings suggest that SL was the predominant factor affecting the dough's entire rheological and thermo-mechanical behavior when analyzed with the Mixolab to predict baking quality. These results can also be observed in Mixolab curves of L samples (Fig. 3a): the higher the SL, the greater the variance from the STD curve, especially in the part referring to protein characteristics (i.e. stability during kneading and the protein weakening illustrated in Table 1). In fact, as per Table S1, increasing L level addition caused a significant (P ≤ 0.001) increase in WA, reduction in C1.2 and C2 torques and dough stability, and delayed protein weakening (C2_t increases with SL increase). Since this curve concerns a protein weakening due to kneading and temperature effects, reduction in these parameters with an SL increase indicates worsening of wheat protein functionality in breadmaking. Additionally, an increased SL significantly (P ≤ 0.001) worsened the pasting consistency of the dough (C3 decrease with SL increase), which may be related to the lower S_p of pulses than cereals, as above.

Flour samples at 10% SL (Fig. 3b and c) were more aligned to the STD curve than those at 30%. Addition of lentil flour at 10% SL significantly (P ≤ 0.05) influenced C1_t, C1.2 and C5 parameters (Table 1) and WA, while none of the remaining parameters were significantly different from those of STD (Table S2). These observations indicated that STD dough enriched with 10% lentil flour can provide a nutritional benefit (e.g. the use of L flour results in a 9% and 64% increase in protein and ash contents, respectively) without altering the rheological profile of the dough at any PS.

Predictably, the effect of adding lentil flour (whole or fractionated) became more significant with increased SLs. Indeed, besides the aforementioned parameters, a progressive significant (P ≤ 0.05) reduction in C2, C3 and stability was observed with 15% SL (Tables S3–S6). At the highest SL, the Mixolab curves were virtually halved compared to STD (Fig. 3c), with almost all torques, times and temperatures significantly (P ≤ 0.05) affected by SL.

As reported previously (Dabija, Codina, & Fradinho, 2017; Erukai-nure et al., 2016), increasing lentil flour SL causes dough weakening, disruption of protein-starch complexes, and alteration of starch gelatinization, amylase activity, and retrogradation processes, implying worse dough handling and baking properties. Indeed, dough weakening as a consequence of pulse flour content is attributable to a decrease in wheat gluten proteins and various components vying for water such as non-gluten proteins and fiber (Hallén İbanoğlu, & Ainsworth 2004; Rosell, Marco, García-Alvarez, & Salazar, 2011).

Interestingly, at SL ≥ 15%, the effect on the dough's rheology was dependent on PS. The use of CL caused a significantly (P ≤ 0.001) lower deterioration in dough rheology than that caused by the finest particles (FL and EFL). Indeed, at any SL, almost all Mixolab parameters for CL doughs resulted closer to the STD curve than those recorded with FL and

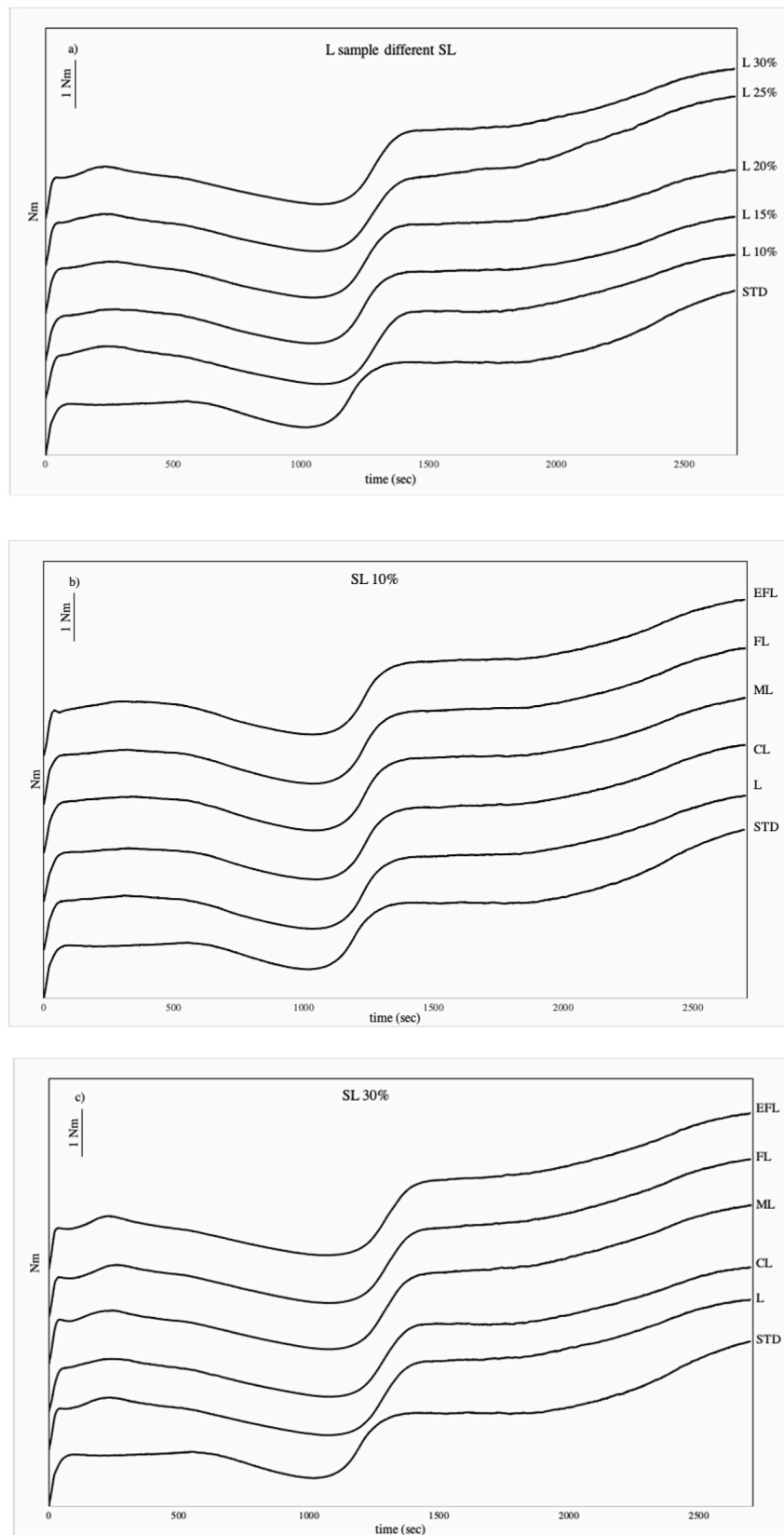


Fig. 3. Mixolab profile of wheat-based dough of STD and a) unrefined red lentil flour samples (L) at all the substitution levels (SLs) tested; b) L and its fractions (LC, LM, LF and LEF) at 10% SL; c) L and its fractions (LC, LM, LF and LEF) at 30% SL. STD, common wheat flour; L, unrefined red lentil flour; CL, coarse lentil flour; ML, medium lentil flour; FL, fine lentil flour; EFL, extra-fine lentil flour.

EFL flours, especially those related to the flours' protein quality (Table 1).

Moreover, focusing on the three stages governed by modification of the physicochemical properties of starch (Table 1), it can be seen that, at any SL, lentil flour addition significantly ($P \leq 0.001$) affected gelatinization and retrogradation (decrease in C3 and C5 compared to STD) without showing a trend as a function of PS.

Considering the contribution of starch retrogradation on bread staling phenomena, a reduction in C5 and its variability as a function of SL x PS may suggest potential shelf-life improvements in finished bakery products compared to STD, due to lower staling rates during storage (Dabija et al., 2017; Erukainure et al., 2016).

4. Conclusions

This study explored the effect of PS on the compositional, functional, morphological, and thermal properties of whole red lentil flour. In addition, the impact of incorporating lentil flour PS and SL on the rheological properties of wheat-flour-based dough was investigated to predict dough quality in baking.

Fractionation significantly affected the WHC, OHC and S_p of whole red lentil flour, while microscopy confirmed associations between PS and cell intactness. However, multivariate statistics suggest that these factors only slightly affect the rheology of wheat-based dough enriched with lentil flour of different PS, demonstrating that the major factor affecting the rheology is SL.

Besides the nutritional benefit derived by the enrichment in protein and ash contents at any SL, lentil/wheat-flour blends up to 10% SL provide the best properties in baking at any PS, while at higher SLs, a general worsening effect on dough rheology may occur, which resulted also dependent upon flour PS. Indeed, with a rheological profile closer to STD, especially in stages governed by protein characteristics, coarser fractions ($>200 \mu\text{m}$) can yield higher performance than unfractionated flour and finer fractions.

These findings advocate the use of lentil flour with a PS $\sim 200 \mu\text{m}$ for breadmaking, although further studies are needed to confirm the effect of PS and SL on the quality of bread made from lentil/wheat flour blends, especially in the case of high substitution level.

Formatting of funding sources

This research did not receive any specific grant from funding agencies in the public, commercial, or not-for-profit sectors.

CRedit authorship contribution statement

Mia Marchini: Investigation, Writing - original draft. **Eleonora Carini:** Conceptualization, Writing - review & editing. **Nicolò Cataldi:** Investigation. **Fatma Boukid:** Formal analysis, Writing - review & editing. **Massimo Blandino:** Investigation, Writing - review & editing. **Tommaso Ganino:** Investigation, Writing - review & editing. **Elena Vittadini:** Conceptualization, Supervision, Writing - review & editing. **Nicoletta Pellegrini:** Conceptualization, Writing - review & editing.

Declaration of competing interest

The authors declared that there is no conflict of interest.

Acknowledgments

The authors thank Molino Martino Rossi SpA (Gadesco Pieve Delmona, CR, Italy) and Molino Agugiario & Figna (Collecchio, PR, Italy) for donating lentil and wheat flours used in the study.

Appendix A. Supplementary data

Supplementary data to this article can be found online at <https://doi.org/10.1016/j.lwt.2020.110299>.

References

- Adebowale, K. O., & Lawal, O. S. (2004). Comparative study of the functional properties of Bambara groundnut (*Voandzeia subterranean*), jack bean (*Canavalia ensiformis*) and mucuna bean (*Mucuna pruriens*) flours. *Food Research International*, 37(4), 355–365. <https://doi.org/10.1016/j.foodres.2004.01.009>
- Aguilera, Y., Esteban, R. M., Benitez, V., Molla, E., & Martin-Cabrejas, M. A. (2009). Starch, functional properties, and microstructural characteristics in chickpea and lentil as affected by thermal processing. *Journal of Agricultural and Food Chemistry*, 57(22). <https://doi.org/10.1021/jf902042r>, 10,682–10,688.
- Ahmed, J., Taher, A., Mulla, M. Z., Al-Hazza, A., & Luciano, G. (2016). Effect of sieve particle size on functional, thermal, rheological, and pasting properties of Indian and Turkish lentil flour. *Journal of Food Engineering*, 186, 34–41. <https://doi.org/10.1016/j.jfoodeng.2016.04.008>
- Ai, Y., & Jane, J. L. (2018). Understanding starch structure and functionality. In M. Sjöö, & L. Nilsson (Eds.), *Starch in food* (pp. 151–178). Woodhead Publishing. <https://doi.org/10.1016/B978-0-08-100868-3.00003-2>.
- Barbana, C., & Boye, J. I. (2013). *In vitro* protein digestibility and physicochemical properties of flours and protein concentrates from two varieties of lentil (*Lens culinaris*). *Food & Function*, 4(2), 310–321. <https://doi.org/10.1039/C2FO30204G>
- Bolade, M. K., Adeyemi, I. A., & Ogunsuma, A. O. (2009). Influence of particle size fractions on the physicochemical properties of maize flour and textural characteristics of a maize-based nonfermented food gel. *International Journal of Food Science and Technology*, 44, 646–655. <https://doi.org/10.1111/j.1365-2621.2008.01903.x>
- Borsuk, Y., Arntfeld, S., Lukow, O. M., Swallow, K., & Malcolmson, L. (2012). Incorporation of pulse flours of different particle size in relation to pita bread quality. *Journal of the Science of Food and Agriculture*, 92(10), 2055–2061. <https://doi.org/10.1002/jsfa.5581>
- Boukid, F., Vittadini, E., Lusuardi, F., Ganino, T., Carini, E., Morreale, F., et al. (2019). a. Does cell wall integrity in legumes flours modulate physicochemical quality and *in vitro* starch hydrolysis of gluten-free bread? *Journal of Functional Foods*, 59, 110–118. <https://doi.org/10.1016/j.jff.2019.05.034>
- Boukid, F., Zannini, E., Carini, E., & Vittadini, E. (2019). b. Pulses for bread fortification: a necessity or a choice? *Trends in Food Science & Technology*, 88, 416–428. <https://doi.org/10.1016/j.tifs.2019.04.007>
- Bourré, L., Frohlich, P., Young, G., Borsuk, Y., Sopiwnyk, E., Sarkar, A., & Malcolmson, L. (2019). Influence of particle size on flour and baking properties of yellow pea, navy bean, and red lentil flours. *Cereal Chemistry*, 96(4), 655–667. <https://doi.org/10.1002/cche.10161>
- Boye, J., Zare, F., & Pletch, A. (2010). Pulse proteins: Processing, characterization, functional properties and applications in food and feed. *Food Research International*, 43, 414–431. <https://doi.org/10.1016/j.foodres.2009.09.003>
- Bresciani, A., & Marti, A. (2019). Using pulses in baked products: Lights, shadows, and potential solutions. *Foods*, 8(10), 451. <https://doi.org/10.3390/foods8100451>
- Chung, H. J., Liu, Q., Donner, E., Hoover, R., Warkentin, T. D., & Vandenberg, B. (2008). Composition, molecular structure, properties, and *in vitro* digestibility of starches from newly released Canadian pulse cultivars. *Cereal Chemistry*, 85(4), 471–479. <https://doi.org/10.1094/CCEM-85-4-0471>
- Dabija, A., Codină, G. G., & Fradinho, P. (2017). Effect of yellow pea flour addition on wheat flour dough and bread quality. *Romanian Biotechnological Letters*, 22(5), 12888. <https://hrcak.srce.hr/47362>.
- Dubat, A. (2010). A new AACCI International approved method to measure rheological properties of a dough sample. *Cereal Foods World*, 55, 150–153. <https://doi.org/10.1094/CFW-55-3-0150>
- Erukainure, O. L., Okafor, J. N., Ogunji, A., Ukazu, H., Okafor, E. N., & Eboagwu, I. L. (2016). Bambara–wheat composite flour: Rheological behavior of dough and functionality in bread. *Food science & nutrition*, 4(6), 852–857. <https://doi.org/10.1002/fsn3.356>
- FAO. (2016). Climate change and food security: Risks and responses. Rome, UN food and agriculture organization. <http://www.fao.org/3/a-i5188e.pdf>.
- Foschia, M., Horstmann, S. W., Arendt, E. K., & Zannini, E. (2017). Legumes as functional ingredients in gluten-free bakery and pasta products. *Annual Review of Food Science and Technology*, 8, 75–96. <https://doi.org/10.1146/annurev-food-030216-030045>
- Hallén, E., İbanoglu, Ş., & Ainsworth, P. (2004). Effect of fermented/germinated cowpea flour addition on the rheological and baking properties of wheat flour. *Journal of Food Engineering*, 63(2), 177–184. [https://doi.org/10.1016/S0260-8774\(03\)00298-X](https://doi.org/10.1016/S0260-8774(03)00298-X)
- Hall, C., Hillen, C., & Garden Robinson, J. (2017). Composition, nutritional value, and health benefits of pulses. *Cereal Chemistry*, 94(1), 11–31. <https://doi.org/10.1094/CCEM-03-16-0069-FI>
- Jarpa-Parra, M. (2018). Lentil protein: A review of functional properties and food application. An overview of lentil protein functionality. *International Journal of Food Science and Technology*, 53(4), 892–903. <https://doi.org/10.1111/ijfs.13685>
- Joshi, M., Timilsena, Y., & Adhikari, B. (2017). Global production, processing and utilization of lentil: A review. *Journal of Integrative Agriculture*, 16(12), 2898–2913. [https://doi.org/10.1016/S2095-3119\(17\)61793-3](https://doi.org/10.1016/S2095-3119(17)61793-3)
- Kathirvel, P., Yamazaki, Y., Zhu, W., & Luhovyy, B. L. (2019). Glucose release from lentil flours digested *in vitro*: The role of particle size. *Cereal Chemistry*, 96(6), 1126–1136. <https://doi.org/10.1002/cche.10223>

- L'Hocine, L., Boye, J. I., & Arcand, Y. (2006). Composition and functional properties of soy protein isolates prepared using alternative defatting and extraction procedures. *Journal of Food Science*, 71(3), 137–145. <https://doi.org/10.1111/j.1365-2621.2006.tb15609.x>
- Lee, H. C., Htoon, A. K., Uthayakumaran, S., & Paterson, J. L. (2007). Chemical and functional quality of protein isolated from alkaline extraction of Australian lentil cultivars: Matilda and Digger. *Food Chemistry*, 102(4), 1199–1207. <https://doi.org/10.1016/j.foodchem.2006.07.008>
- Lin, S., Gao, J., Jin, X., Wang, Y., Dong, Z., Ying, J., et al. (2020). Whole-wheat flour particle size influences dough properties, bread structure and in vitro starch digestibility. *Food & Function*, 11(4), 3610–3620. <https://doi.org/10.1039/C9FO02587A>
- Li, W., Xiao, X., Guo, S., Ouyang, S., Luo, Q., Zheng, J., et al. (2014). Proximate composition of triangular pea, white pea, spotted colored pea, and small white kidney bean and their starch properties. *Food and Bioprocess Technology*, 7(4), 1078–1087. <https://doi.org/10.1007/s11947-013-1128-2>
- Luhovy, B. L., Hamilton, A., Kathirvel, P., & Mustafaalsafin, H. (2017). The effect of navy bean flour particle size on carbohydrate digestion rate measured in vitro. *Cereal Foods World*, 62(5), 208–213.
- Ma, Z., Boye, J. I., Simpson, B. K., Prasher, S. O., Monpetit, D., & Malcolmson, L. (2011). Thermal processing effects on the functional properties and microstructure of lentil, chickpea, and pea flours. *Food Research International*, 44, 2534–2544. <https://doi.org/10.1016/j.foodres.2010.12.017>
- Malcolmson, L., Boux, G., Bellido, A. S., & Frohlich, P. (2013). Use of pulse ingredients to develop healthier baked products. *Cereal Foods World*, 58(1), 27–32. <https://doi.org/10.1094/CFW-58-1-0027>
- Melini, F., Melini, V., Luziatelli, F., & Ruzzi, M. (2017). Current and forward-looking approaches to technological and nutritional improvements of gluten-free bread with legume flours: A critical review. *Comprehensive Reviews in Food Science and Food Safety*, 16(5), 1101–1122. <https://doi.org/10.1111/1541-4337.12279>
- Monnet, A. F., Laleg, K., Michon, C., & Micard, V. (2019). Legume enriched cereal products: A generic approach derived from material science to predict their structuring by the process and their final properties. *Trends in Food Science & Technology*, 86, 131–143. <https://doi.org/10.1016/j.tifs.2019.02.027>
- Nguyen, D. Q., Mounir, S., & Allaf, K. (2015). Functional properties of water holding capacity, oil holding capacity, wettability, and sedimentation of swell-dried soybean powder. *Scholars Journal of Engineering and Technology*, 3(4B), 402–412.
- Pellegrini, N., Vittadini, E., & Fogliano, V. (2020). Designing food structure to slow down digestion in starch-rich products. *Current Opinion in Food Science*, 32, 50–57. <https://doi.org/10.1016/j.cofs.2020.01.010>
- Robertson, J. A., Monredon, D. F., Dysler, P., Guillon, F., Amado, R., & Thibault, J. F. (2000). Hydration properties of dietary fiber and resistant starch: A European collaborative study. *Food Science and Technology*, 33, 72–79. <https://doi.org/10.1006/food.1999.0595>
- Rosell, C. M., Marco, C., García-Alvárez, J., & Salazar, J. (2011). Rheological properties of rice–soybean protein composite flours assessed by Mixolab and ultrasound. *Journal of Food Process Engineering*, 34(6), 1838–1859. <https://doi.org/10.1111/j.1745-4530.2009.00501.x>
- Rovalino-Córdova, A. M., Fogliano, V., & Capuano, E. (2019). The effect of cell wall encapsulation on macronutrients digestion: A case study in kidney beans. *Food Chemistry*, 286, 557–566. <https://doi.org/10.1016/j.foodchem.2019.02.057>
- Shafi, M., Baba, W. N., & Masoodi, F. A. (2017). Composite flour blends: Influence of particle size of water chestnut flour on nutraceutical potential and quality of Indian flat breads. *Journal of Food Measurement and Characterization*, 11(3), 1094–1105. <https://doi.org/10.1007/s11694-017-9486-5>
- Sozer, N., Holopainen-Mantila, U., & Poutanen, K. (2017). Traditional and new food uses of pulses. *Cereal Chemistry*, 94(1), 66–73. <https://doi.org/10.1094/CCHEM-04-16-0082-FI>
- Walde, S. G., Tummala, J., Lakshminarayan, S. M., & Balaraman, M. (2005). The effect of rice flour on pasting and particle size distribution of green gram (*Phaseolus radiata*, L. Wilczek) dried batter. *International Journal of Food Science and Technology*, 40, 935–942. <https://doi.org/10.1111/j.1365-2621.2005.01027.x>
- Wang, J., Zhao, M., Yang, X., & Jiang, Y. (2006). Improvement on functional properties of wheat gluten by enzymatic hydrolysis and ultrafiltration. *Journal of Cereal Science*, 44(1), 93–100. <https://doi.org/10.1016/j.jcs.2006.04.002>
- Wani, I. A., Sogi, D. S., Hamdani, A. M., Gani, A., Bhat, N. A., & Shah, A. (2016). Isolation, composition, and physicochemical properties of starch from legumes: A review. *Starch Staerke*, 68(9–10), 834–845. <https://doi.org/10.1002/star.201600007>
- Yadav, R. B., Yadav, B. S., & Dhull, N. (2012). Effect of incorporation of plantain and chickpea flours on the quality characteristics of biscuits. *Journal of Food Science & Technology*, 49(2), 207–213. <https://doi.org/10.1007/s13197-011-0271-x>
- Zeng, J., Gao, H., & Li, G. (2014). Functional properties of wheat starch with different particle size distribution. *Journal of the Science of Food and Agriculture*, 94(1), 57–62. <https://doi.org/10.1002/jsfa.6186>